

LED Work Lights

ISO 9001
Certified

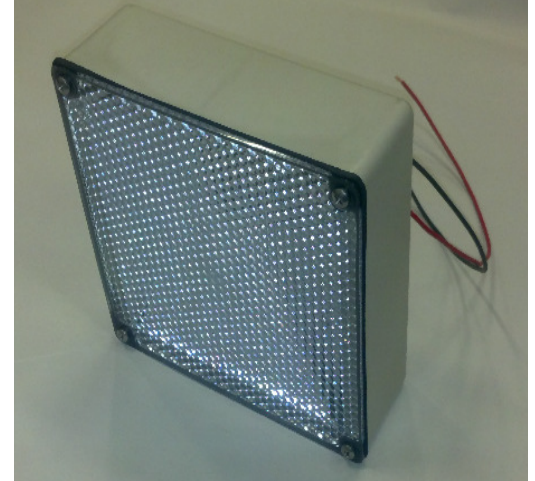
The Power To See

Better Illumination of Hazards and Improve Productivity

Our Latest LED Work and Underbody Lighting systems offer a very effective way to illuminate the areas surrounding and beneath a vehicle. Better illumination under vehicles improves night time and low-light visibility for the people driving, loading, and maintaining work vehicles. This enables them to avoid hazards while improving their productivity. It also makes the vehicle more visible to other drivers sharing the road with them.

Our easy-to-install kits use the 12 or 24 volt DC current supplied by the vehicles battery. The lighting assemblies are weather and chemical resistant. They are available in White or Amber LED configuration.

Complete Lighting systems are available. These kits can contain Automatic Control Modules, Internconnecting cables, and all installation hardware.



White Part Number: 20154-1
Amber part Number: 20154-2

FEATURES and SPECIFICATIONS

- ❖ Improves night time visibility around vehicles and increases visibility to other vehicles
- ❖ Drivers and workers can see material being applied or unloaded much easier
- ❖ Provides on-demand lighting for inspections, loading, unloading, and on-road operations, services and even repairs to vehicles
- ❖ Suitable for Straight Trucks and Tractor Trailer
- ❖ Available in White or Amber Lighting
- ❖ Drop in replacement with the previous Underbody lights sold by TST/Riverside
- ❖ Complete lighting systems available: Kits contain 2, 4, and 6 lamps and all harnessing and hardware needed for installation
- ❖ **Operating Voltage:** 9 - 32V
- ❖ **Operating Temperature:** -40 degrees F (-40C) to +180 degrees F (+82C)
- ❖ **Max Current Draw at 12V:** 1.5 Amps
- ❖ **Max Current Draw at 24V:** 1.0 Amp
- ❖ **Light Output:** ~900 Lumens

**Made in the
USA**



TST/Riverside Mfg., LLC
14510 Lima Road
Ft. Wayne, IN 46818

www.tst-corp.com

800-428-4449 Toll Free in USA
260-637-4470 Main
260-637-4472 FAX

www.riversidemfg.com



LED Work Lights

The Power To See

Operation

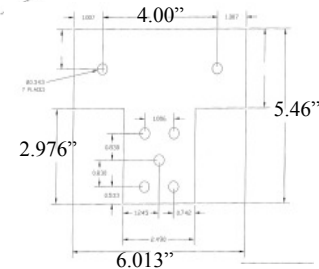
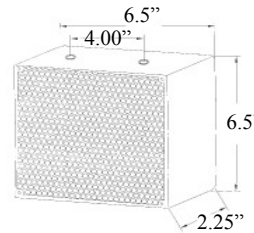
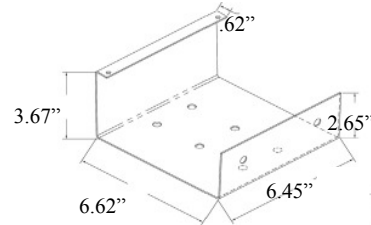
The standard control for the lighting systems is an On/Off Rocker switch. We have various styles available. We also offer an intuitive control module that allows for the lamps to work automatically through your chassis inputs, Turn signals, back up lights, or 4 way hazards. This control module triggers the right side lights to turn on when the corresponding turn signals are activated. Similarly, the left side turn signal triggers the left side Safety Lighting. All the lights are activated by either the back up circuit or the hazard or 4-way flasher.



(Rocker Switch)



(Control Module)



Mounting

A wide selection of mounting options and bracket materials make installation rugged and simple.

Packaging

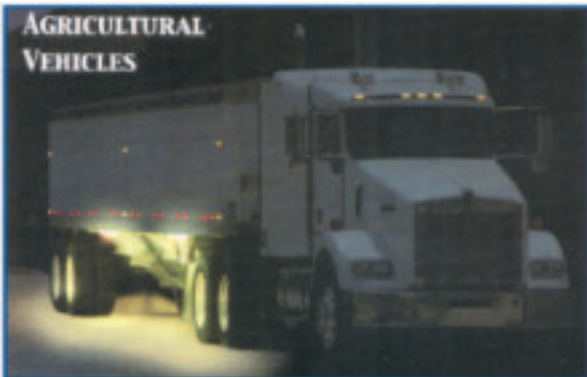
These Work and Underbody lights can be purchased as individual components or packaged with all the parts and supplies required for your installation, including circuit breakers, wire ties, brackets, control modules, wire harnesses. These installation kits are available for applications including Snow Plows, Work Trucks, Tractor Trailers, Utility Vehicles, Ambulance, and Fire trucks and many other specialty applications.



- Common Lighting System Numbers
- | | |
|-----------------|-------------|
| LK102-H7606A | LK102-H3SPR |
| LK104-H7606A | LK104-H3 |
| LK104-H7606A-L | LK104-H3UT |
| LK104-H7606A-NA | LK104-H3A |

Options

White LED and Amber LED light assemblies are available. Whichever color you select you will have lighting that is designed to increase the safety and efficiency of your driving operations.



TST/Riverside Mfg., LLC
 14510 Lima Road
 Ft. Wayne, IN 46818
www.tst-corp.com

800-428-4449 Toll Free in USA
 260-637-4470 Main
 260-637-4472 FAX
www.riversidemfg.com

